

ASN CANADA FIA



CACC

**CONFEDERATION OF AUTOSPORT CAR CLUBS
ICE RACE RULES
EFFECTIVE JANUARY 1, 2018**

No express or implied warranties of safety of fitness for a particular purpose shall be intended or result from the publication or compliance with these or any other official regulations.

All rights reserved. This book may not be reproduced in any form or by any means without written permission from the Confederation of Autosport Car Clubs.

Copyright 2018, CACC
CACC

Confederation of Autosport Car Clubs

Copyright @1994 First Printing
@1995 – 2018 Revised

| | |
|---|----|
| 1. FORWARD TO THE 2018 EDITION | 3 |
| 2. TERMINOLOGY | 4 |
| 3. ICE RACE EVENT REGULATIONS | |
| A. General Regulations | 7 |
| B. Ice Race Event..... | 7 |
| 4. INSURANCE | 7 |
| A. Event Insurance | 7 |
| B. Coverage | 7 |
| C. Disclosure..... | 7 |
| D. Accident Reports | 8 |
| 5. RACE OFFICIALS | 8 |
| 6. DRIVER ELIGIBILITY | 8 |
| A. Novice Driver Requirements | 8 |
| B. Senior Driver Requirements | 8 |
| 6. VEHICLE ELIGIBILITY | 9 |
| A. General | 9 |
| B. Preparation Rules | 9 |
| C. Competition Numbers | 10 |
| 8. SAFETY EQUIPMENT | 10 |
| A. Driver Restraints | 10 |
| B. Helmets | 10 |
| C. Head Restraints | 10 |
| D. Roll Cages | 10 |
| E. Eye Protection | 10 |
| F. Fire Extinguishers | 10 |
| 9. EVENT REGULATIONS | 11 |
| 10. FLAG DEFINITIONS | 11 |
| 11. TIRES..... | 12 |
| 12. EVENT SAFETY | 13 |
| A. Sufficient Course Workers | 13 |
| B. Communications..... | 13 |
| C. Spectator Safety..... | 13 |
| D. Safety of Officials | 13 |
| E. Equipment | 14 |
| F. First Aid and Emergency Requirements..... | 14 |
| 14. QUERIES, PROTESTS, APPEALS AND PENALTIES..... | 14 |

1. FOREWARD TO 2018 EDITION

Effective January 01, 2018, previous editions of the Ice Race Rule Book as well as all previous CACC Competition Bulletins are superseded by the following CACC Ice Race Rule Book. CACC reserves the right to revise these rules, to issue supplements to them, and initiate special rulings at any time in an emergency. Changes to these rules will become effective upon the official issuing of a CACC Competition Bulletin and/or publishing of any changes in the CACC newsletter. Questions concerning rules clarifications should be directed to the CACC Ice Race Director.

The rules and regulations set forth herein were established by the CACC and are intended to assist in the orderly conduct of Ice Race events and to further participant and spectator safety.

The text of these regulations was originally drafted in English and may be translated into other languages. In case of a dispute between the English text and that of any other translation, the English text shall prevail. In this Rule Book, any reference to the masculine shall include the feminine, and references to the singular shall include the plural.

Portions of this Rule Book differing from previous editions are denoted by a solid black 'change bar' (as shown at left) which indicates that a rule has been added, amended, or expanded in definition.

By participation in these events, all participants are deemed to have agreed to be bound by the CACC GCR's and this rulebook. The interpretation and determinations of these rules by CACC officials shall be final and binding. In order to maintain a sporting nature, to achieve prompt competition results, and in consideration of the benefits to them, all members, clubs, and officials of CACC hereby agree that:

Determinations by CACC officials are non-litigable;

No litigation shall be initiated against CACC or its members and officials to reverse or modify results of such determinations, or to seek to recover damages or other relief allegedly incurred or required as a result of such determination; and

Where a person initiates or maintains litigation in violation of this provision, that person agrees to reimburse CACC for all costs associated with the legal action.

2. TERMINOLOGY

The following definitions are adopted for use in the CACC GCR's, in the Regulations of CACC, in the appendices thereto, in all Supplementary Regulations, and for general use.

| | |
|-----------------|---|
| ASN: | Canada's National Motorsports Sanctioning Authority recognized by the FIA as the sole holder of the sporting power in a country. |
| AUTOMOBILE: | A land vehicle propelled by its own means, running on at least four wheels not in a line, which must always be in contact with the ground and of which at least two must effect steering and at least two the propulsion. |
| CACC: | Confederation of Autosport Car Clubs is the governing body for motorsport events in the Province of British Columbia. Its duties and powers include, but are not limited to assuring that Ice Race events are conducted in accordance with this Rule Book |
| CACC EXECUTIVE: | A group of four or more individuals responsible for the administration of and overseeing of the conduct of events, and the enacting of policies as adopted by the membership of the CACC |
| CLUB: | Any body recognized by CACC as a club. |
| COMPETITION: | A contest, governed by the CACC GCR's and the applicable event regulations, in which an automobile takes part and which is of a competitive nature or is given a competitive nature by publication of results. |
| COMPETITOR: | A person whose entry is accepted for any event or who competes in any event, whether as an entrant or as a driver. |
| COURSE: | The route to be followed by a competitor in a competition. |
| DISCIPLINE: | All CACC competitions are categorized by type of activity or "discipline" (e.g. Race, Rally, Ice Race, SoloSprint, etc.) |
| DRIVER: | A person nominated as the driver of an automobile in any competition. |
| ENTRANT: | A person or organization whose entry is accepted for any competition. |
| EVENT: | A program of one or more competitions. |
| FIA: | Fédération internationale de l'automobile, the international federation of National Automobile Clubs. The governing body for all motoring in the world. |

| | |
|----------------------|--|
| ICE RACE EVENT: | An event in which vehicles run as a group on a designated course and results are determined by the first vehicle to cross the finish line within a pre-determined amount of time. |
| LICENSE: | A certificate of registration issued by CACC or ASN to any person wishing to take part in Ice Race competitions. |
| LICENSED COMPETITOR: | Any competitor who has applied for and received a CACC Competition License that is valid for the current competition year. |
| MARKED RACETRACK: | means that portion of a race track that is used by cars for racing and includes the racing surface and the pit lane. |
| ORGANIZER(S): | A person or persons approved by CACC and authorized by promoters, clubs, or other groups to organize an event on their behalf. Where an organizer is appointed to act on behalf of promoters, such organizer shall take the place of such promoters for the purposes of the CACC GCR's and shall be deemed to be the agent of the promoters. |
| ORGANIZING PERMIT: | The documentary authority to organize and hold a competition granted solely by CACC. |
| PARTICIPANT: | Means any person or body involved at an event as an official, entrant, driver, crew or worker. |
| PENALTY: | Means a punishment for breaching a rule or regulation |
| REGIONAL EVENT: | An event which is open to members of any CACC Club which CACC regional permit registered competitors within a Region. |
| REGULATIONS: | A set of regulations in addition to the CACC GCR's which may be issued from time to time by CACC to meet particular situations which might arise outside of the CACC GCR's, or to meet a particular problem of a more or less temporary nature. |
| SANCTIONED EVENT: | Any event or competition authorized and approved by CACC and having the appropriate organizing permit. |
| START/FINISH LINE: | Means the control line on an event course and represents the point at which an event first commences as well as the point at which an event completes. |

SUPPLEMENTAL REGULATIONS:

Regulations drawn up by the organizers of a competition or competitions and approved by CACC with the object of laying down details of such competitions. These are supplementary to the CACC GCR's and the Regulations of CACC.

3. ICE RACE EVENT REGULATIONS

A. GENERAL REGULATIONS

The regulations contained in this section shall apply to all Ice Race Events held in British Columbia. They were designed to assist in ensuring a safe and enjoyable event. The regulations contained in this section are the minimum acceptable requirements that must be adhered to in all CACC sanctioned Ice Race Events. Ice Race Events must also fully comply with the regulations contained in the CACC General Competition Rules. Organizers of Ice Race Events may elect to specify more comprehensive regulations as necessary.

B. ICE RACE EVENT

A CACC sanctioned event held under the CACC General Competition Rules (GCR's) and the CACC Ice Race regulations in which cars run as a group on a designated surface; where racing speeds are attained; where maximum safety protection is afforded to the spectators and property; and in which competitors are required to possess at least a valid CACC Competition License.

4. INSURANCE

General Liability Insurance is provided under the ASN Canada FIA insurance plan. All CACC affiliated clubs must be covered by this minimum level of insurance. The policy protects CACC, the affiliated club, property owners, workers and sponsors against claims for injury or property damage brought against them by the general public. A CACC Affiliated club purchasing the annual policy will have all coverage for a twelve month period, March 1st through April 30th. For insurance coverage under the ASN Canada FIA master plan, clubs must apply directly to the CACC for Affiliation. Affiliation with the CACC and General Liability Insurance under the ASN Canada FIA plan are mutually inclusive. The term for CACC Affiliation is January 1st through December 31st.

A. Event Insurance

Clubs organizing and hosting Ice Race events must apply for and receive an Event Permit from the CACC and must apply for and receive appropriate Event Insurance from ASN Canada FIA.

B. Coverage:

All competitors, officials, and workers will be covered against damage to third parties but will be responsible for any deductible amounts. All competitors, officials, workers, and all other persons who are permitted to enter areas normally closed to the general public must sign the insurance waiver before being allowed to participate in the event. Originals of the waiver are available from the CACC Executive Office. Property owners or sponsor names may be added to the club insurance certificate upon request.

C. Disclosure:

The organizing club of an event must ensure that the Event Permit and Insurance Certificate are posted at the event.

D. Accident Reports:

All accidents must be reported by forwarding a completed accident report form to the CACC Executive Office within forty-eight (48) hours of the conclusion of the event. The accident report

form, available from the CACC Executive Office, should contain as many details as possible, including names and addresses of injured parties and witnesses, medical treatment provided, etc. The accident report form must be completed for all accidents whether or not a claim is anticipated.

5. RACE OFFICIALS

As per the 2018 CACC General Competition Rules, Appendix I, 1 to 9 and such additions as required from time to time.

6. DRIVER ELIGIBILITY

Any person sixteen (16) or older who is the holder of a valid provincial driver's license, which includes those designated "L" or "N", is eligible to apply for a CACC Ice Race License.

Any person who wishes to compete in an Ice Race Event must complete a "Self Declaration Medical Form". No doctor appointment is required.

A. Novice Driver Requirements:

- 1) Any person who has not competed in an Automobile Ice Race Event within the past 5 years must participate in the Novice Training Program (Proof of previous competition must be provided by the entrant.)
- 2) Must possess a current CACC Novice Ice Race Competition License
- 3) Each host club will appoint a Novice Program Director who will oversee all aspects of the Novice Training Program under the supervision of the Ice Race Discipline Director.
- 4) The Novice Training Program may consist of:
 - A. A written motor sport knowledge test
 - B. On track training with senior driver in chosen tire group
 - C. Practice sessions for Novices only in chosen tire group
 - D. At the discretion of the Novice Director may participate in Senior races held throughout the season.
- 5) Novice driving competition vehicles must display an ICBC "N" on the rear of their car. "N" will be provided by the Novice Program Director.

B. Senior Driver Requirements:

- 1) A senior driver shall be any driver who has held a CACC Senior Ice Race Competition License in the past 5 years and competed in a minimum of two (2) complete Ice Race events. (Proof of previous competition must be provided by the entrant).
- 2) Must possess a current CACC Senior Ice Race Competition License.

7. VEHICLE ELIGIBILITY

A. General:

All vehicles must be in a safe condition and pass an inspection to be conducted prior to the event. All items in this section are to be inspected to ensure the vehicle meets all requirements without exception and are subject to the approval of the scrutineer at each event.

If a race vehicle does not comply with one or more of the preparation/safety requirements the

Technical Inspector, in consultation with the Clerk of the Course may or may not let the vehicle compete. The Technical Inspector will give the vehicle owner or driver the list of deficiencies in writing. If the Technical Inspector permits the vehicle to compete that weekend, ALL deficiencies MUST BE fixed before the vehicle can compete in the next race weekend.

If the Technical Inspector, or his/her designate, checks a vehicle immediately after a race and it is found to be in violation of any of the rules, the driver shall lose any points awarded in that race.

B. Preparation Rules:

It is recommended to read the CACC General Competition Rules for exact data when constructing a new vehicle.

1. 5 point seat belts as per the CACC GCR's.
2. Roll cages complying with CACC General Competition Rules Appendix 1 are required.
3. All batteries, not in stock location, must be mounted to the car and enclosed. (Note: the battery must be securely mounted to the car, ie: seat belts are not adequate).
4. All cars must have a substantial firewall between engine and driver.
5. All cars must have operational four wheel brakes.
6. Operational and visible headlights or driving lights, red taillights and red brake lights are mandatory. LED lights are recommended for tail and brake lights.
7. All taillights must be mounted on the exterior of the vehicle. An 1156/3156 or equivalent wattage bulb is required.
8. A combination brake/running light mounted high on the rear of the vehicle is mandatory. An 1157/3157 or equivalent wattage bulb is required.
9. Brake lights must be operational and RED. An 1157/3157 or equivalent wattage bulb is required for the combination brake/running light mounted high on the rear of the car is mandatory.
10. It mandatory that all vehicles run a high mount, rear facing, always on amber/orange light on the exterior of the vehicle
11. Functional inside and outside rear-view mirrors are mandatory.
12. All ballast must be contained and secured with metal to metal fasteners.
13. Maximum sound output for each vehicle is 105dB.
14. Windshield wipers must be operational on the driver's side of the car. Adequate eye protection must be worn by all drivers in vehicles which do not have legal windscreens.
15. **Bumpers: No protruding sharp objects.** Bumpers to be stock or stock appearing or may be constructed of any material so as to replicate appearance and design of a stock bumper. All bumpers, whose design necessitates it, must have substantial end caps (ie: a piece of tire bolted to the bumper and the fender).
16. Race cars may not exceed a wheelbase of 112 inches.
17. Catch tanks for engine vents are mandatory as follows: 1 x 1 litres for oil and 1 x 1 litres for water OR 1 x 2 litres for both oil & water
18. It is mandatory that a fire extinguisher with a minimum 5BC rating and gauge be mounted securely in the car with a metal strap. (NOTE: fire extinguishers must be *certified upon purchase* and re-certified every two years and/or after each use.)
19. All vehicles must have adequate *and clearly marked*, front and rear towing points.
20. A window net must be fitted, or the driver's window must be rolled at least half way up when the car is on the race course.
21. Mud flaps are recommended behind each rear wheel for all vehicles, as well as both front wheels in front wheel drive or all-wheel drive vehicles. Mud flaps must cover the entire tread face of the tire and reach to within three (3) inches of the ice surface without touching the ice

surface when the vehicle is static on its racing tires and in racing trim. Mud flaps must be made from a material that will effectively prevent sailing.

22. **Environmentally sensitive anti-freeze is mandatory in all competition vehicles** (ie: propylene glycol)
23. White cars must have significant contrasting colors or marking to ensure their visibility.

C. Competition Numbers

Clear and **HIGHLY CONTRASTING** digits must be displayed on both sides on both front doors (placement to be in the centre of each door) of each competition vehicle. Such digits shall be no smaller than 10” high and 1.5” wide and shall be in a solid colour on a solid background of a significantly contrasting colour.

8. SAFETY EQUIPMENT

A. DRIVER RESTRAINT

- 1) Seat belts are mandatory and must comply with the current CACC General Competition Rules, Appendix IV
- 2) A window net must be fitted, or the driver’s window must be rolled at least half way up when the car is on the race course.

B. HELMETS:

Helmets must comply with current CACC General Competition Rules, Appendix III, 2b and Appendix III, 3a-c.

C. HEAD RESTRAINTS:

Frontal Head Restraint Devices as per current CACC General Competition Rules, Appendix III, 4a & b are strongly recommended.

D. ROLL CAGES

Roll cages complying with current CACC General Competition Rules Appendix 1 are required. (Note: passenger door requires two anti-intrusion bars).

E. EYE PROTECTION

Adequate eye protection must be worn by all drivers in vehicles which do not have legal windscreens.

F. FIRE EXTINGUISHERS:

It is mandatory that a fire extinguisher with a minimum 5BC rating and gauge be mounted securely in the car with a metal strap. (NOTE: fire extinguishers must be *certified upon purchase* and re-certified every two years and/or after each use.

9. EVENT REGULATIONS

- a) The waiver must be signed by everyone. Anyone under the age of eighteen(18) must sign a “minor consent” waiver each race weekend and have a “parental consent” form signed one time by both parents/guardians prior to receiving permission to race or work a race event.
- b) There must be a minimum of 8 inches of ice on or near the racing surface as measured and recorded at regular intervals throughout the day.
- c) All due caution for environmental protection is to be taken while handling toxic products in the

- pits. Littering or fluid spills by any person on or around the race venue may result in the exclusion of the driver and will leave persons so doing, open to charges under the Fish and Wildlife Protection Act.
- d) There will be no alcohol/controlled substance consumption at the race venue. Any alcohol/controlled substance consumption will result in the exclusion of the entrant from the entire weekend.
 - e) The organizer(s) reserves the right to refuse entry

10. FLAG DEFINITIONS

GREEN FLAG – Go; used by the starter and corner marshals to indicate that the track is clear.

RED FLAG – There is a potentially dangerous situation on the track. Slow down immediately, stop racing and come to a SAFE controlled stop on the driver’s right of the track as quickly as you are able. Remain stopped until directed by the Pace Car or corner marshal to proceed in single file to designated area.

BLACK FLAG WITH RED/ORANGE CIRCLE with car number displayed – “Meatball” – informs driver of a mechanical problem likely to cause danger. Reduce speed and PROCEED TO THE PITS where you will be advised of the problem.

DIAGONAL BLACK/WHITE FLAG – car number displayed “Bermuda” Diagonal Black & White Flag with– warns driver of unsportsmanlike or unsafe conduct and that a penalty may be pending. Flag will only be shown once as a warning. Any subsequent infractions will be dealt with using the black flag.

BLACK FLAG - “Full Black Flag with car number displayed” – finish the current lap, then report immediately to a pre-designated location for instructions

“Full Black Flag with *all* displayed” – track session has been halted, drivers shall slow down immediately, proceed to the pre-grid area in single file. No work or servicing may be performed on any car until after the track has been re-opened, except under the direction of the Steward.

YELLOW FLAG – Any yellow flag is a signal of danger of any nature at, or beyond the station displaying the flag.

- a. Standing Yellow – take care, danger, slow down. No passing from the flag until past the emergency area(s). Once the emergency area(s) is passed and the driver can see that there is no yellow flag displayed at the next station, racing may resume.
- b. Waving Yellow – great danger, SLOW DOWN, be prepared to stop. No passing from the yellow flag until completely clear of the emergency area(s). Once clear of the emergency area(s) and the driver can see that there is no yellow flag displayed at the next station, racing may resume.
- c. Full Course Yellow – (shown as double yellows) great danger, SLOW DOWN, no passing, be prepared to line up single file behind the pace car. Once the emergency area(s) or problem is cleared, the pace car will leave the track and the starter will display a green flag for racing to resume.

YELLOW FLAG W/RED STRIPES– standing – take care, used to indicate debris on track (tires, pylons, car parts, etc.)

BLUE FLAG

- a. Standing Blue – watch your mirrors, another competitor is following very closely;
- b. Waving Blue – watch your mirrors, a faster competitor is trying to overtake and/or pass you.

CHECKERED FLAG – The race is over. Once receiving this flag, racing must stop, all drivers slow down and complete one more lap, then return to the pit area.

The IGNORING OF ANY FLAG may result in the competitor being excluded from the race, the weekend, the series and/or loss of series points, *at the discretion of the Steward of the event.*

11. TIRES

GROUP A: RUBBER-TO-ICE:

Shall be allowed any type of tire providing no foreign objects of any nature are embedded therein. *No tractionizing or non-factory sypping of any kind is allowed.*

GROUP B: STREET LEGAL STUDS

Shall be any brand DOT street legal tire with DOT approved studs up to an including 20 studs per lineal foot, protruding no more than 3.5mm. Tires will be measured and marked by the technical inspector at the beginning of each event and shall be the only tires permitted on the vehicle for all Street Legal races held during that event. A maximum of two spare tires will be permitted for the purpose of replacing flat tires during a race.

GROUP C: RACING STUDS

Studs

Tires may have studs up to and including 38 studs per lineal foot of running surface. Studs shall conform to the diagram in Fig. 1 and specifications as set out in these rules. (No upward tolerance of these dimensions is permitted.) Also, any re-cap tire with studs conforming to the diagram below will be permitted.

- Maximum tip diameter: 2.6mm
- Maximum shank diameter at tip: 5.2mm
- Maximum taper: 0.6mm on diameter
- Maximum flange diameter at tip: 9.1mm
- Maximum overall length: 16.1mm

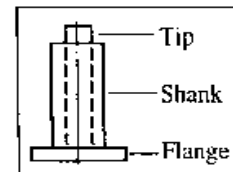


Fig. 1

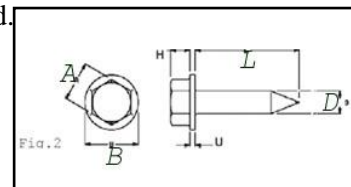
Menard Tires, complete with 28 studs per lineal foot, are permitted. No changes to these tires or studs are permitted.

Screws

Tires may have up to and including 45 hex washer head screws per lineal foot of running surface. Hex heads can be plain or slotted. Screws may protrude through the inside of the carcass and they may be fastened. Such screws are to conform to the diagram in Fig 2 and the following dimensions. No upward tolerance of these dimensions is permitted.

- A. .250
- B. .375
- D. Free
- H. .145
- L. Free
- U. .035

Fig 2.



Screws must be installed with the hex head pointing outwards. The screws may penetrate the

casing and may be fastened on the inside. Screws must have 1/4" hex heads. The hex heads may not be modified in any way. No additional washers or spacers may be used.

Bolts

Tires may have up to and including 15 bolts per lineal foot of running surface. Such bolts are to conform to the diagram in Fig. 2 above and the dimensions below. (No upward tolerance of these dimensions is permitted). Bolts must penetrate the tire casing from outside and be fastened inside with a nut and washer or "T nut". Bolts may be installed in any pattern provided no more than the maximum number is installed in any lineal foot of the tire. Bolts must be flush with the outer surface of the tire, and the tire must have not more than 2/32" of visible tread (ie: wear bars must be flush with the tread surface). Tires can be mounted using inner tubes or sealant.

A.375 H. .250 B. .530 U. .250 D. Free L. Free

C. *For measurement purposes at the event the Technical Inspector may take any 12" of a tire.*

12.EVENT SAFETY

A. Sufficient Course Workers:

There must be adequate course workers to oversee all competition and to ensure equality and safety to all competitors as determined by the Steward and/or Clerk of the Course.

B. Communications:

A reliable communication system linking all flagging stations with the clerk of the course shall be established.

C. Spectator Safety:

It is important that the spectator viewing areas and the spectator parking areas be kept a safe distance from the course. Course security is a must at all times. Uninformed and misguided spectators are to be expected, and adequate crowd control provisions must be made to avoid their unwanted and dangerous wanderings onto the course area.

D. Safety of Officials:

Full consideration must be given to safety in the pits, around the start/finish areas, and near the flag stations. Particular attention must be given to assuring that timekeepers and course workers are not placed in hazardous locations.

E. Equipment:

The organizer must provide each marshal station and the start/finish area with the appropriate blue, yellow, red, and red-striped yellow flags. The start/finish area must also be provided with a full set of flags. These flags shall be used to communicate with the drivers when they are on the course, and all workers must be trained in their proper use.

F. First Aid and Emergency Requirements:

The following minimum emergency safeguards must be in effect at all times during an Ice Race competition, including driving instruction sessions.

- 1) At least one fully equipped first aid kit must be present and available.
- 2) At least one first aid attendant must be on duty and readily available at all times. Said attendant must be currently certified by St. John Ambulance or equivalent, as qualified to

- perform cardiopulmonary resuscitation. Other attendants must be currently certified by St. John Ambulance or equivalent, as having Standard First Aid training.
- 3) At least one vehicle solely reserved for the transport of an injured person must be available at all times.
 - 4) A minimum of one five pound 10BC dry-chemical fire extinguisher must be provided at each Marshall station, the start/finish area, and in the pits, all with capable operators. 10BC foam-type extinguishers may also be used to replace the dry-chemical extinguishers.
 - 5) The organizer must elaborate a prearranged safety plan to cope with major emergencies. The organizer must appoint one person to contact Emergency Medical Services via phone and must prepare instructions and directions describing the best route to the site. No others should make emergency calls.

QUERIES, PROTESTS, APPEALS AND PENALTIES

All queries, protests, appeals and penalties shall be administered as outlined in the CACC General Competition Rules sections 11, 12, 13 and 14.